



# TAKE CHARGE

## APPLICATION CONTROL & FLEET MANAGEMENT AT A TOUCH

From a computer, tablet or smartphone, improve your operational savings by optimizing your equipment and employees supporting it. M-Link empowers you to gain full visibility over remote assets and their performance with real-time monitoring, remote setting changes, program updates and notifications of possible issues before a shutdown occurs.

- Wi-Fi, Bluetooth and Ethernet for local data viewing and configuration
- All internal antennas
- Dual cellular modem with satellite capability ensures broadband field connectivity with built-in Wi-Fi hotspot
- Automatically chooses the best service provider at the site: AT&T, Verizon or Iridium
- Integrates FW Murphy-connected devices to manage over-the-air updates across your fleet
- Smart devices using the M-Link app provide real-time data viewing and more.

The M-Link app and desktop experience allows users to interact with their application. Here are highlights of some features.

**M-LINK**<sup>®</sup>





# MAIN DASHBOARD



## ACTIVE ASSET

Shows selected asset for an in-depth look

- Overview offers key details
- Quick action buttons
  - Suspend/Unsuspend
  - Reboot
  - Download Current Configuration
  - Ariel Fleet Management Website\*
  - Additional Device Information

\* Only available on units equipped with Ariel ASC

## ASSET LIST

Lists all assets available

- Dots give quick view to equipment status
- See the whole fleet in one space

## SHUTDOWNS

Historical shutdowns show trends

- Firstout indication of cause of shutdown
- Troubleshoot areas causing issues
- Run reports and export data

## REAL-TIME DATA

Group datapoints in order you choose

- Select parameters needed for trending and charting
- Export information for reporting

## SETPOINT

View setpoints in real-time

- Remotely edit from web or mobile

## ASSET STATUS

View real-time information that you select

- Choose up to 12 gauges from Real-Time Datapoints to show on home screen
- Upload photo of application equipment
- Enter labels to identify key attributes

## ALERT MANAGEMENT

Configure alerts for important events such as shutdowns

- Suppress alerts to avoid excess messaging
- Receive alerts via text, email or voice
- Emails included in package pricing; texts pooled across fleet

The dashboard displays the following sections:

- Asset List:** A list of assets with filters and an 'Export' button. The selected asset is 74135 - FWMPD Dobermann.
- Asset Status:** A central panel with six gauges: RPM (1,312), Engine Oil Pressure (58.6), Suction Pressure (28.8), Discharge Pressure (249.4), Compressor Oil Pressure (58.6), and System Voltage (23.7). It also includes asset information and labels.
- Real-Time Data:** A table of datapoints with columns for Chart, Group, Name, Value, and Timestamp.
- Alert Management:** A section for configuring alerts, showing a count of 10 alerts.
- Shutdowns:** A table of current shutdowns with columns for Shutdown, Source, and Timestamp.
- Setpoint:** A section for viewing and editing setpoints, showing a list of parameters like Stage 2 Suction Prs Scaled Max.

**Legend**

- Running:** Unit is running at operational speed as of last update
- Warmup / Cooldown:** Unit is running below operational speed as of last update
- Cold:** Unit is disconnected and has not sent a message in 24 hours
- Stopped:** Unit is not running as of last update
- Warning:** Unit is running with active J1939 faults
- Unknown:** Unit has not been powered on or is not equipped to send valid status
- Suspended:** Unit's active service plan is suspended. No data is being sent

## ADDITIONAL WIDGETS

- File Transfer
- Diagnostic Messages
- Run History Report

The Shutdowns widget displays a table with columns for Shutdown, Source, and Timestamp. It includes a 'Refresh' button and a 'Showing 1 of 1' indicator.

The Real-Time Data widget shows a list of datapoints with columns for Group, Name, Value, and Timestamp. It also includes a 'Request Data Now' button and a chart showing the trend of a selected datapoint.

The Setpoint widget displays a table with columns for Name, Value, and Timestamp. It includes a 'Refresh' button and a 'Request Data Now' button.

# FLEET MANAGEMENT

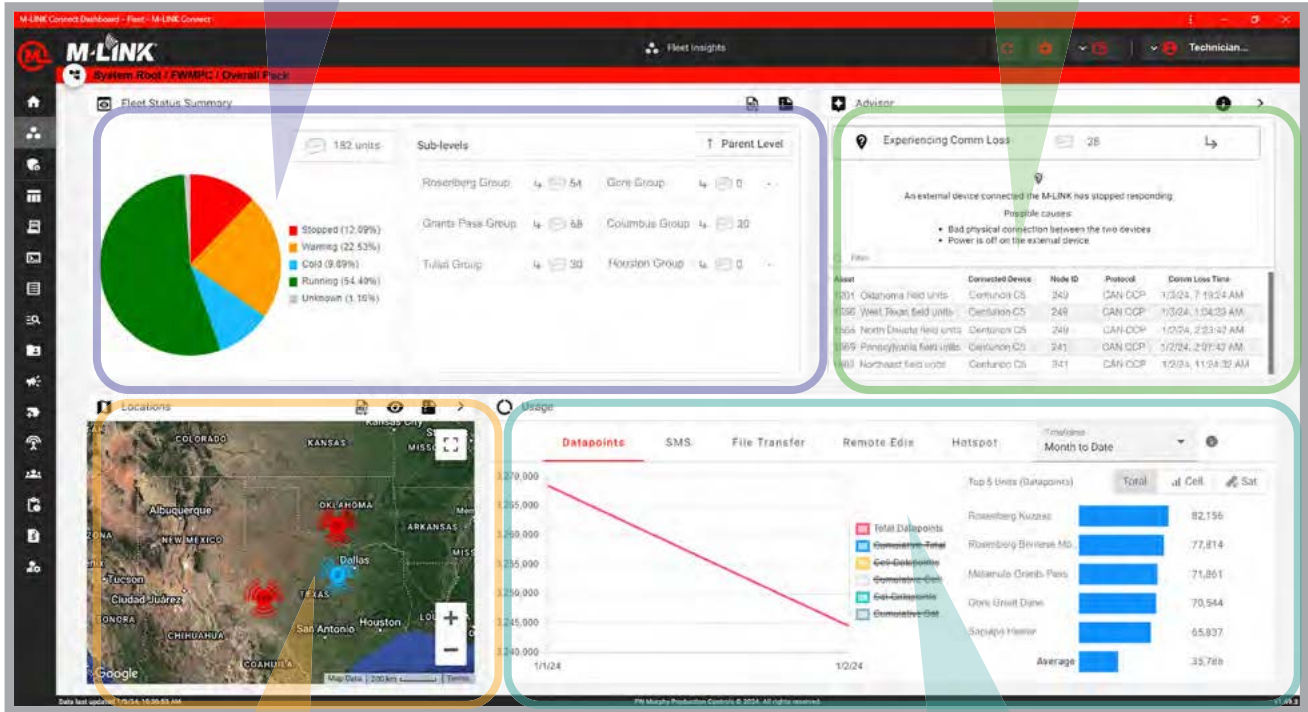
Take charge of your business with M-Link's new dashboard created specifically for fleet management. See stats, maps, data and more at a glance. More features will roll out as customers voice their needs. Contact your FW Murphy sales representative to learn more about M-Link and let us know what features you would like to see next.

## STATUS SUMMARY

- Quick overview then drill into each group
- See each clients' assets easily
- Quick access to fleet with a click

## ADVISOR

- Tracks communication status and assists with troubleshooting of unit



## LOCATIONS

- Shows real-time location and status
- Links with smartphone map function to route you to the asset

## USAGE

- Understand data usage across the fleet
- Overview of units helps understand billing and invoicing
- Determine if there is a need to change plans or suspend units or change configuration of units if using more data than expected

**MANUFACTURING, SALES & ENGINEERING**  
2151 RANDON DYER ROAD  
ROSENBERG, TX 77471

**SALES, SERVICES & SUPPORT**  
4646 S HARVARD AVE  
TULSA, OK 74135

**DOMESTIC SALES & SUPPORT**  
FW MURPHY PRODUCTS  
PHONE: 918 957 1000  
EMAIL: INFO@FWMURPHY.COM  
WWW.FWMURPHY.COM

**FW MURPHY CONTROL SYSTEMS & SERVICES**  
PHONE: 281 633 4500  
EMAIL: CSS-SOLUTIONS@DOVERPRECISION.COM

**INTERNATIONAL SALES & SUPPORT**  
LATIN AMERICA & CARIBBEAN  
PHONE: +1 918 770 8775  
EMAIL: INTERNATIONAL@FWMURPHY.COM



FM 668933 (Rosenberg, TX - USA)

