

Liquid Level Control

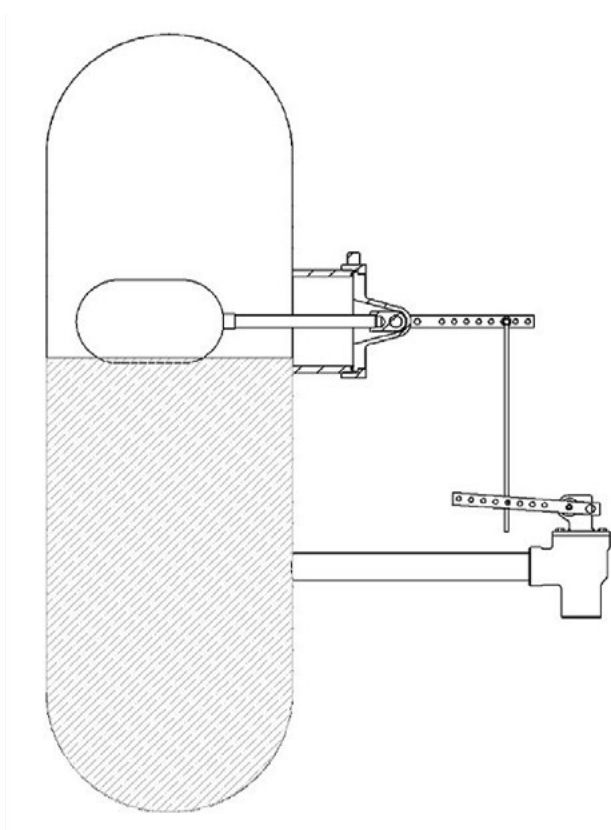
LC70 Model

The LC70 is a float operated liquid level control device sometimes referred to as a trunnion or a float nose. The LC70 utilizes a large float, linkage rod and levers to mechanically operate a dump valve via rotational connections.

The LC70 is available in two different body styles: Union and Bolted. The levers can easily be changed from the left to right to match the dump valve mount. Multiple parts and accessories are available to fit a wide variety of configurations.

When used with a CV45 mechanical valve, the LC70 can provide a level control/dump system that is completely emissions free.

Typical Installation



Typical installation of LC70 and CV45 mechanical valve



LC70 with Weld Neck, Arm and Float



LC70 with Arm and Float

All trademarks and service marks used in this document are the property of their respective owners. This Beaumont Manufacturing and Distribution Co. product is exclusively distributed for new equipment packages by FW Murphy in the Natural Gas Compression market.

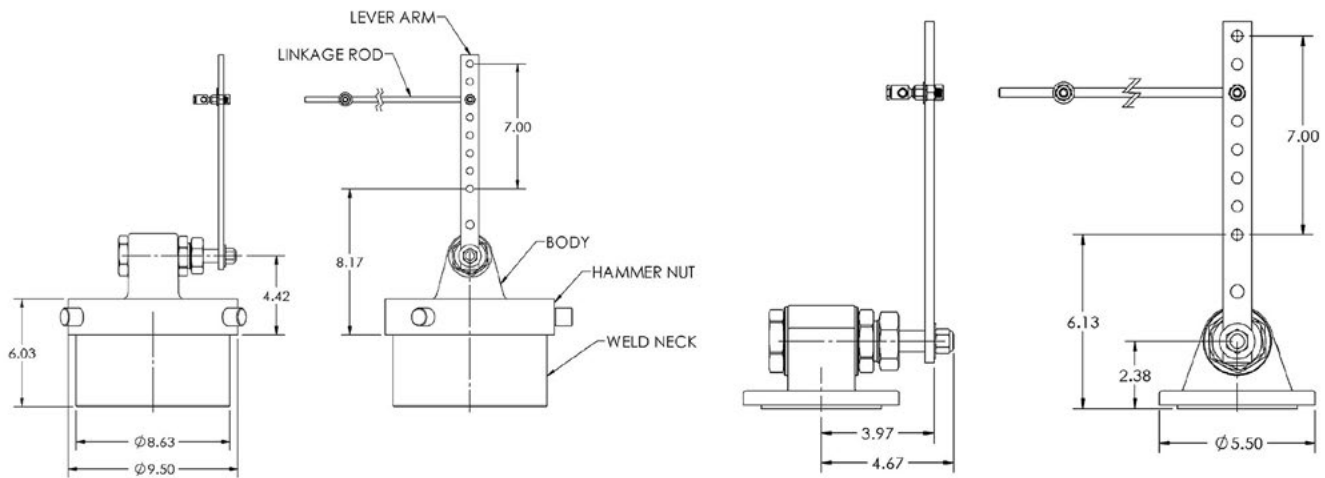
Specifications

- Sizes:** 8" and 5" union connections, 5" bolted connection
- Pressure Rating:** 500 psi
- Temperature Range:** -20° F to 400° F (-29° C to 204° C)
- Materials:**
 - Body:** A216 Gr WCC steel
 - Float:** Powder coated steel
 - Float Arm:** 3/4" SST
 - Shaft:** 304 SST
 - Bushings:** 304 SST
 - Seals:** Viton

Dimensions (inches)

Union Connection

Bolted Connection

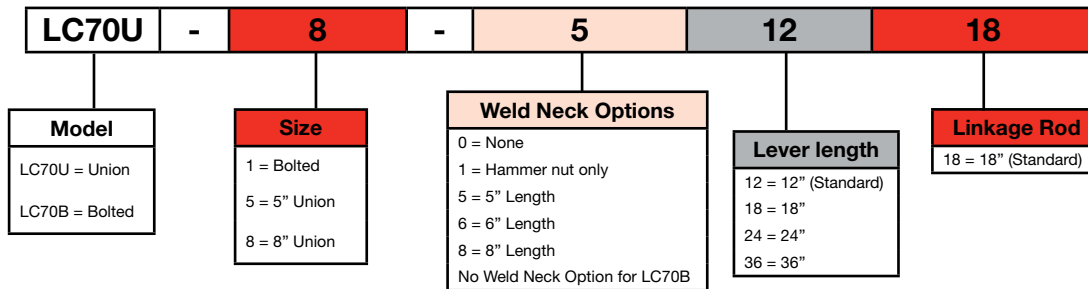


How to Order

Options are listed below. All configurations may not be available. Call your sales representative or FW Murphy for more information. Repair kits are available.

Example Model No. **LC70U-8-51218**

LC70 Series Liquid Level Controller with Union Connection, 8" Union, 5" Weld Neck, 12" Lever, 18" Linkage Rod



Float and Arm Sold Separately

Parts and Accessories Sold Separately		
Category	BMD Part Number	Description
Levers	57-05-0664	Lever Style 12 Inch LC70
Float Arms	57-05-0585	Arm float 12 inch LC70 solid SST
	57-05-0586	Arm float 24 inch LC70 solid SST
Weights	57-05-0580	Weight 1 lb LC70
	57-05-0581	Weight 2 lb LC70
	57-05-0582	Weight 5 lb LC70
	57-05-0583	Weight 10 lb LC70
	57-05-0584	Collar weight LC70
Floats	57-05-0502	7" x 12" CS w/ powder coat
	57-05-0485	14" spherical CS w/ powder coat
Hammer Union	57-05-0368	Hammer Union 8" ACME

FW Murphy is the exclusive BMD distributor for new equipment packages.