

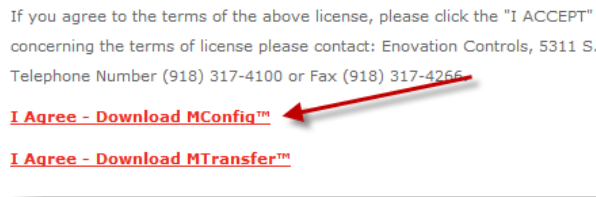
FW Murphy VRU Pro Configuration Guide using MConfig™ v1.60
February 18, 2016

1.0 General Information

- 1.1 All VRU Pro controllers have firmware that controls the operation of the controller. The latest version of firmware and the tool to generate the firmware will always be found on the FW Murphy website at www.fwmurphy.com.
- 1.2 ***All configuration settings, faults, timers, etc. can be adjusted using the Setup Menu and the keypad on the controller.** (*The digital input fault text must be separately generated and installed via USB using the Digital Input Fault Message Editor available at www.fwmurphy.com.)
- 1.3 Use the VRU Pro Sequence of Operation manual as a reference for description of setpoints and range of adjustments.
<http://www.fwmurphy.com/uploaded/documents/pdfs/00-02-0979.pdf>
- 1.4 MConfig PC software can be **optionally** used to upload/download configuration settings to the VRU Pro using RS-485 communication.
- 1.5 MConfig PC software can also be used to setup the VRU Pro offline (away from the panel), then download later.
- 1.6 MConfig must be installed on the PC used for the file transfers. Access the license agreement and installation from the link below.

<http://www.fwmurphy.com/software/license>

After reading this, click on the link shown at the bottom of that page.



If you agree to the terms of the above license, please click the "I ACCEPT" concerning the terms of license please contact: Enovation Controls, 5311 S. Telephone Number (918) 317-4100 or Fax (918) 317-4255

[I Agree - Download MConfig™](#)

[I Agree - Download MTransfer™](#)

- 1.7 Most PCs are not equipped with RS-485 ports, therefore a USB to RS-485 adapter is needed to communicate to the VRU Pro over RS-485. A PC Interface Kit, which includes this adapter, accessory is available for purchase (part #53702325).



- 1.7.1 It may be necessary, if USB drivers for Murphy controllers are not already installed, to install the USB Driver setup.exe software. Note: If you have already installed Centurion USB drivers in the past, this step is not required.

1.7.1.1 Visit the website link: <http://www.fwmurphy.com/support/software.htm>

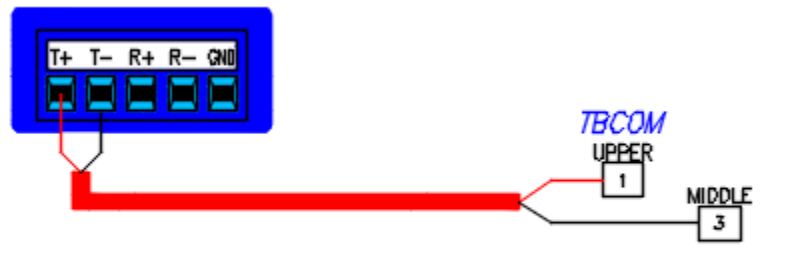
1.7.1.2 Click the links on the page below and print this document for instructions and USB driver installer for the USB driver.

- PC drivers for Centurion and Centurion Plus controllers:
 - [USB Drivers for Windows XP/Server 2003/Vista/7](#) (Executable File for Silicon Labs CP210x USB to Serial Bridge v6.5 driver; 6950kB; Updated 05/2012 to include digitally signed Windows 7 64 bit driver) **Note: This driver is required for the Centurion product family.**
 - [USB Driver Installation Guide](#) - updated 01/2012 for v6.5 (PDF File)

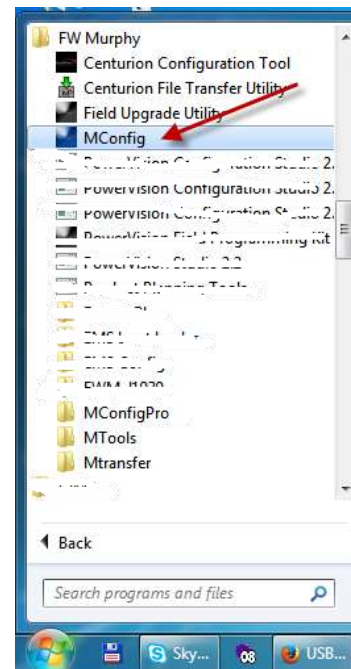
1.7.1.3 Use the USB Driver Installation Guide to install the software, and determine the COM port assignment for the USB to RS-485 adapter on the PC. **Remember this COM number for future configuration transfers.**

2.0 Upload & Edit Setpoint Configuration in VRU Pro panel

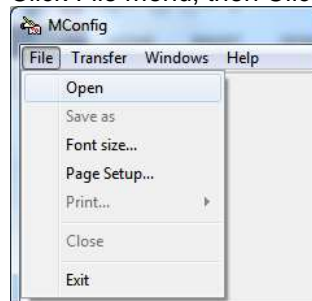
- 2.1 Connect the USB adapter T+ to the TBCOM pin 1 and RS-485 T- to the TBCOM pin 2 in the panel.



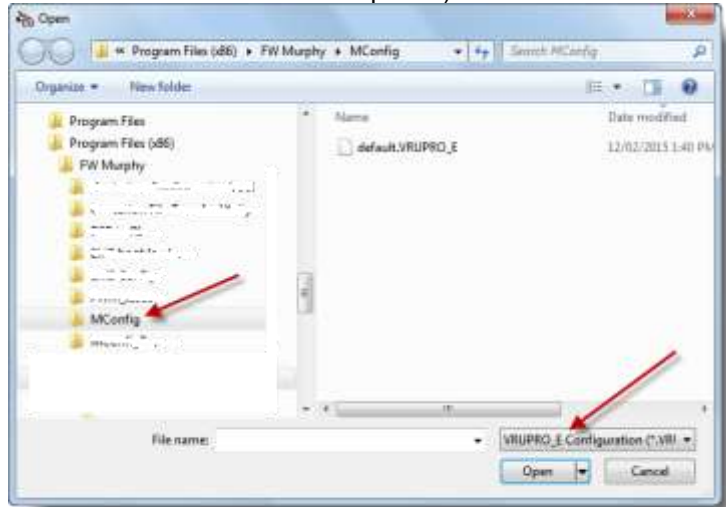
- 2.2 Run MConfig software on the PC. After the installation, it will appear in the start menu under FW Murphy group as shown on the right.



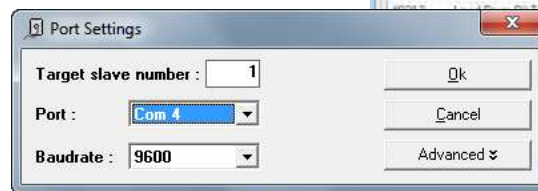
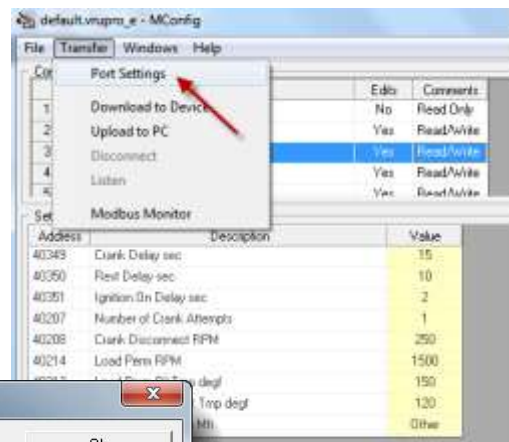
- 2.3 Click File menu, then Click on Open.



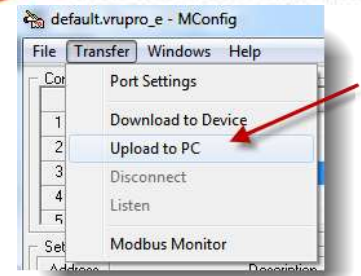
- 2.4 Navigate to the location of the default VRU Pro configuration file supplied by FW Murphy from the dialog, and click OPEN. This will be in the Program Files\FW Murphy\MConfig folder on the PC. NOTE: You may need to change the selection for the Controller type to VRUPRO_X to see the default configuration file. (Note: X would be replaced by the configuration file firmware version. Always use the letter that matches the firmware found in the VRU Pro installed in the panel.)



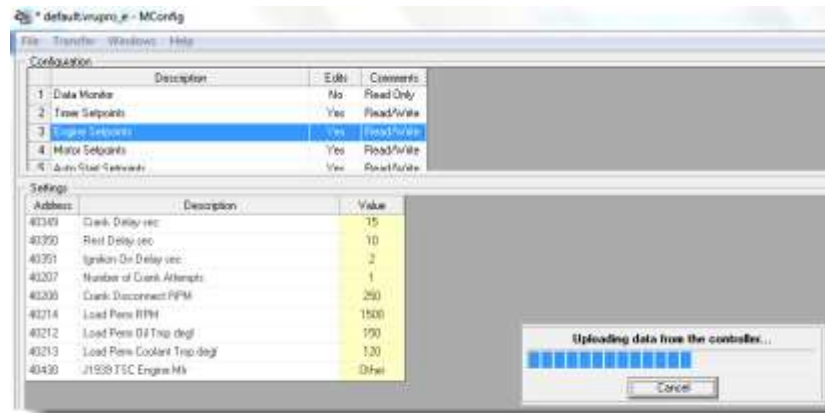
- 2.5 When the configuration window appears, select Transfer menu, then click on Port Settings. The default settings are shown. Select the port assignment determined by the USB adapter (*refer to **USB Driver Installation section 1.6 for instructions on determining the correct COM assignment for the PC***). Click OK to proceed.



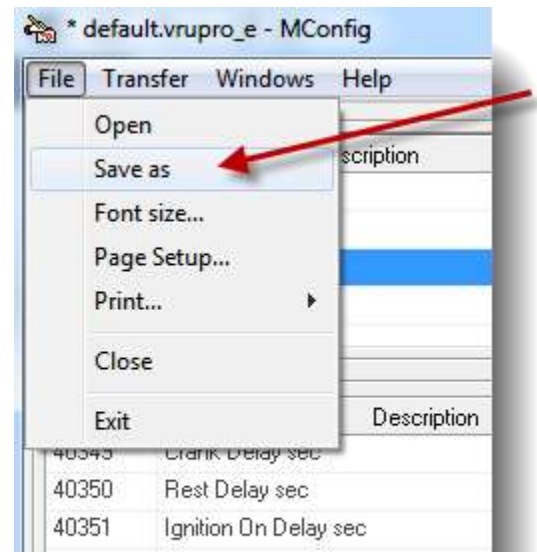
2.6 To upload from the VRU Pro, click on the Transfer menu, and select Upload to PC. All readings will be uploaded from the controller.



2.7 When the transfer is done, a live window will remain, where you can make online changes to setpoints by double clicking on a yellow field or see the actual readings.



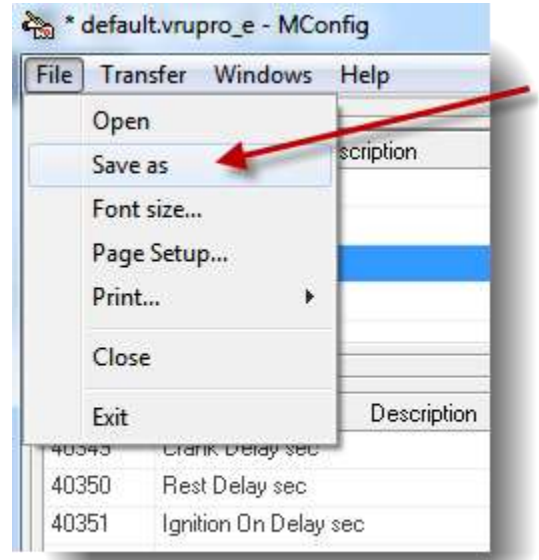
2.8 To save the configuration on the PC, click the File menu and choose Save as. You can give it any name except default. That same file can be used to download to another panel or printed for a record of the setpoints.



3.0 Offline Edit / Download Setpoint Configuration to VRU Pro Panel

3.1 The steps for offline edit are the same as in Section 2.0 except that no RS-485 connection is required until a download is required and no upload transfer is initiated as described in section 2.6. Instead the default configuration can be opened and changed without a live connection to the VRU Pro panel.

3.2 When all modifications are complete, save the configuration on the PC. Click the File menu and choose Save as. You can give it any name except default.



3.3 To download the file to the VRU Pro, setup the RS-485 connection as described in section 2.1 and 2.5, then click on the Transfer menu, and select Download to Device.



3.4 All readings will be written from the PC to the VRU Pro.

