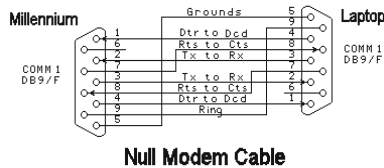


FW Murphy Millennium Controller File Transfer Guide using MTransfer v1.4.16
January 7, 2013

1.0 General Information

- 1.1 The Millennium controller uses PRJ files which contain the display program and may also contain setpoint files and Isagraf logic program files called resources.
- 1.2 The PRJ files are transferred to the components using MTransfer and a null modem RS232 connection to the components. The interface supports 3 wire RS232.



- 1.3 A USB to RS232 serial null cable may be necessary for PCs that do not have a 9-pin RS232 serial port. The following cable has been tested and confirmed to be 100% compatible with the Millennium.
 - 1.3.1 Startech 1 Port USB to Null Modem RS232 DB9 Serial DCE Adapter Cable with FTDI model # ICUSB232FTN.

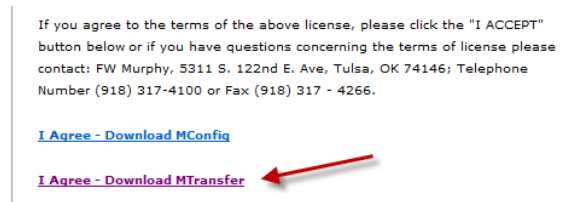


NOTE: USB to Serial adapters based on the Prolific and Phillips brand chipsets have timing irregularity that may cause file transfers to fail.

- 1.4 MTransfer must be installed on the PC used for the file transfers. Access the license agreement and installation from the link below.

<http://www.fwmurphy.com/software/license>

After reading this, click on the link shown at the bottom of that page.



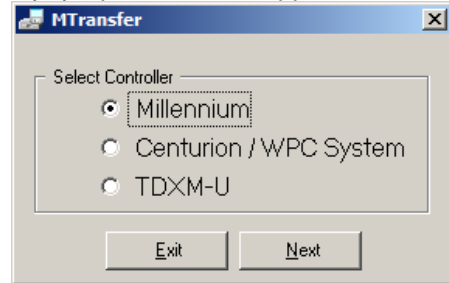
2.0 Downloading PRJ file to Millennium

2.1 Connect the PC to the Millennium COM1 serial port using the null modem serial cable.

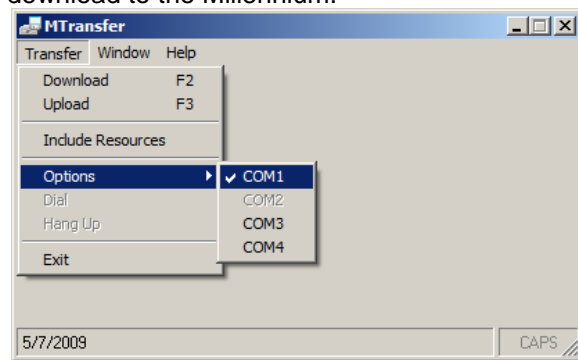
2.2 Run MTransfer software by double-clicking the MTransfer shortcut on the desktop.



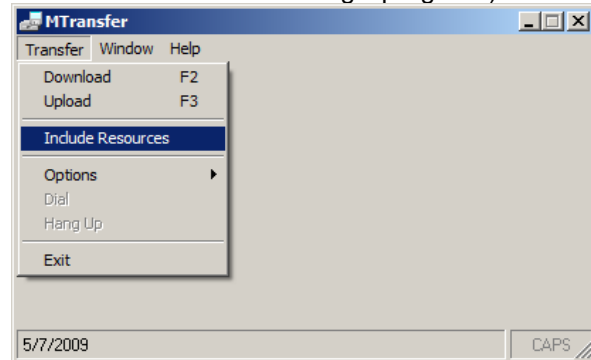
2.3 A pop-up window will appear...choose Millennium then click NEXT.



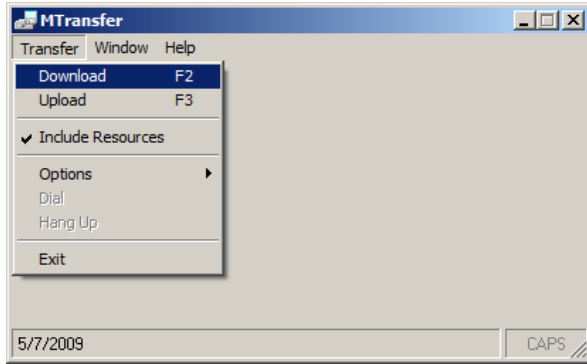
2.4 Click Transfer menu, and Click on Options to verify the PC comm port that you will use to download to the Millennium.



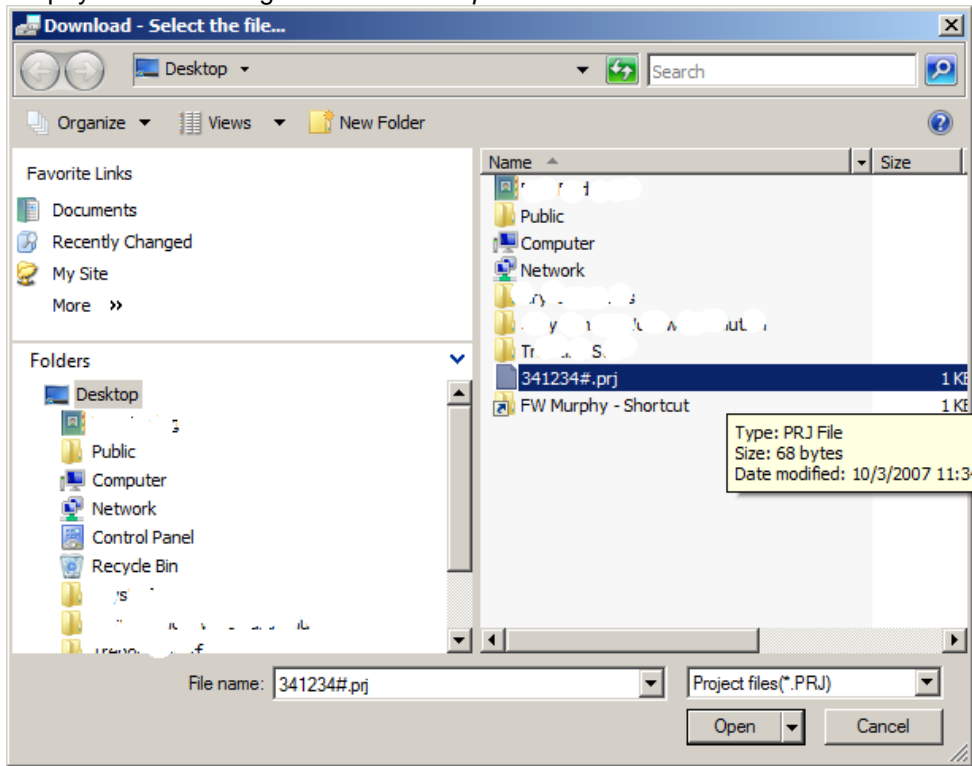
2.5 Click Transfer menu again, and Click Include Resources. This will include the setpoint and configuration files and any new logic program that was packaged by FW Murphy in the PRJ that was sent to you. (NOTE: FW Murphy must provide a Packed version for this transfer to include the logic program.)



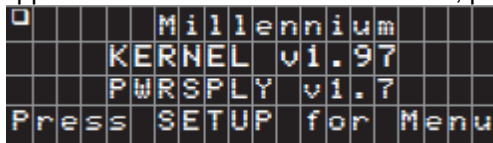
2.6 Click Transfer Menu, and select download.



2.7 Use the Select File window to navigate to the location of the PRJ file supplied by FW Murphy from the dialog. *Do Not Click Open...*



2.8 Power up the Millennium controller. After approximately 15 seconds, a prompt will appear on the Millennium. At this time, press the SETUP/ENTER key.



- 2.9 The setup menu will be displayed. Press the DOWN arrow key to move the cursor to the Enable Transfer option, then press the SETUP/ENTER key.

```
*      Setup Menu      *
Login (5)              0
Enable Transfer
Remove Application
```

- 2.10 The Millennium is ready to receive the download. It will wait 30 seconds to receive the download from the PC.

```
      Millennium
Enable Transfer in
      MDesigner
      Scanning COM1
```

- 2.11 In MTransfer, click OPEN (on the file that you had previously selected to open).
 2.12 A progress bar will appear on MTransfer, showing the status of the download. The Millennium will show:

```
      Millennium
Download in Progress
      Receiving...
```

- 2.13 Then the Millennium will show:

```
      Millennium
Download in Progress
      Decompressing...
```

- 2.14 When the download is complete, the Millennium will return to the SETUP menu. Press ESC/ACK key to run the program.

```
*      Setup Menu      *
Login (5)              0
Enable Transfer
Remove Application
```

3.0 **Uploading PRJ file to Millennium**

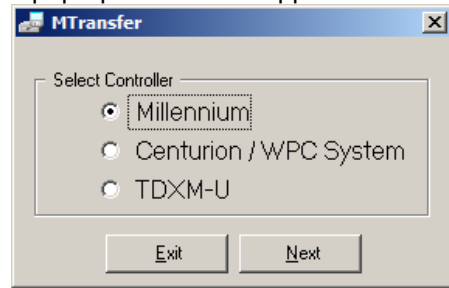
3.1 Uploading the PRJ file from the Millennium extracts the display pages and setpoint files along with shut-down logs stored on the controller for downloading into another controller running the same logic program. **THIS DOES NOT TRANSFER THE LOGIC PROGRAM.**

3.2 Connect the PC to the Millennium COM1 serial port using the null modem serial cable.

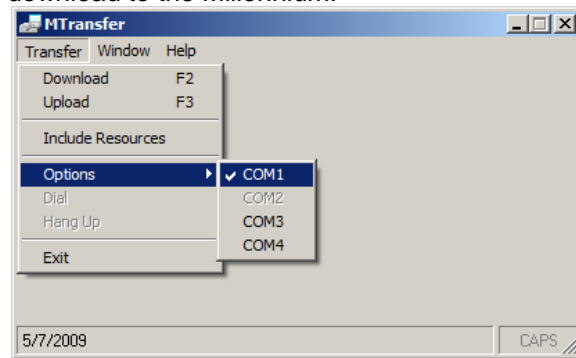
3.3 Run MTransfer software by double-clicking the MTransfer shortcut on the desktop.



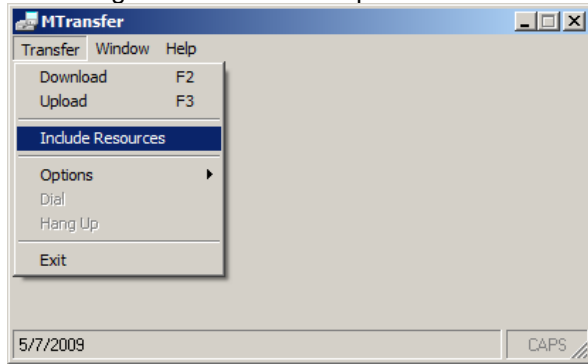
3.4 A pop-up window will appear...choose Millennium then click NEXT.



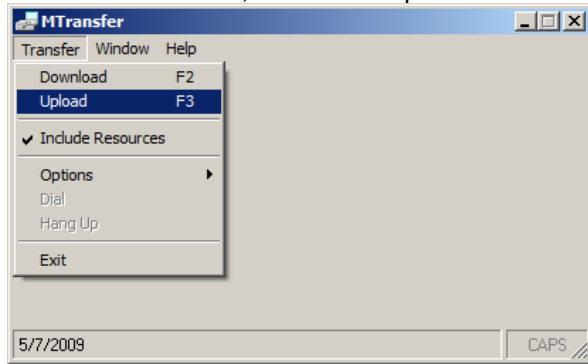
3.5 Click Transfer menu, and Click on Options to verify the PC comm port that you will use to download to the Millennium.



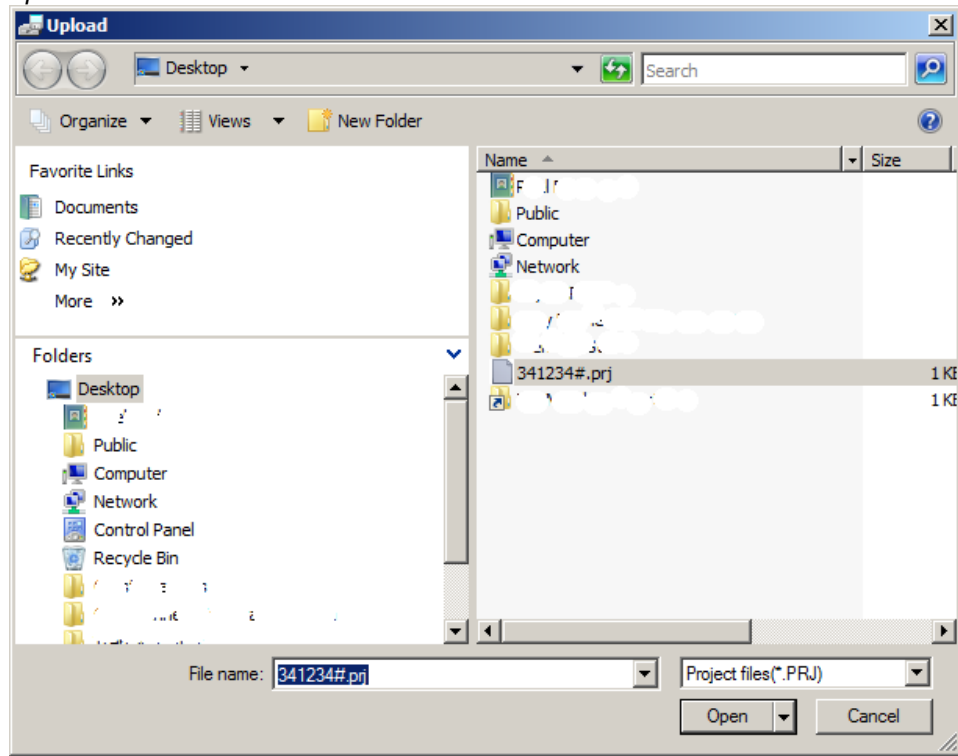
- 3.6 Click Transfer menu again, and Click Include Resources. This will include the setpoint and configuration files in the upload.



- 3.7 Click Transfer Menu, and select Upload.



- 3.8 A new window appears. Select a location for the file to be stored, and type in the desired name for the uploaded file. In the example below, the name is 341234#.prj. *Do Not Click Open...*



- 3.9 Power up the Millennium controller. After approximately 15 seconds, a prompt will appear on the Millennium. At this time, press the SETUP/ENTER key.

```

Millennium
KERNEL v1.97
PWRSPY v1.7
Press SETUP for Menu
  
```

- 3.10 The setup menu will be displayed. Press the DOWN arrow key to move the cursor to the Enable Transfer option, then press the SETUP/ENTER key.

```

* Setup Menu *
Login (5) 0
Enable Transfer
Remove Application
  
```

- 3.11 The Millennium is ready to receive the download. It will wait 30 seconds to receive the download from the PC.

```

Millennium
Enable Transfer in
MDesigner
Scanning COM1
  
```

- 3.12 In MTransfer, click OPEN (on the file that you had previously selected to open).
- 3.13 A progress bar will appear on MTransfer showing the status of the download.
- 3.14 When the download is complete, the Millennium will return to the SETUP menu. Press ESC/ACK key to run the program.