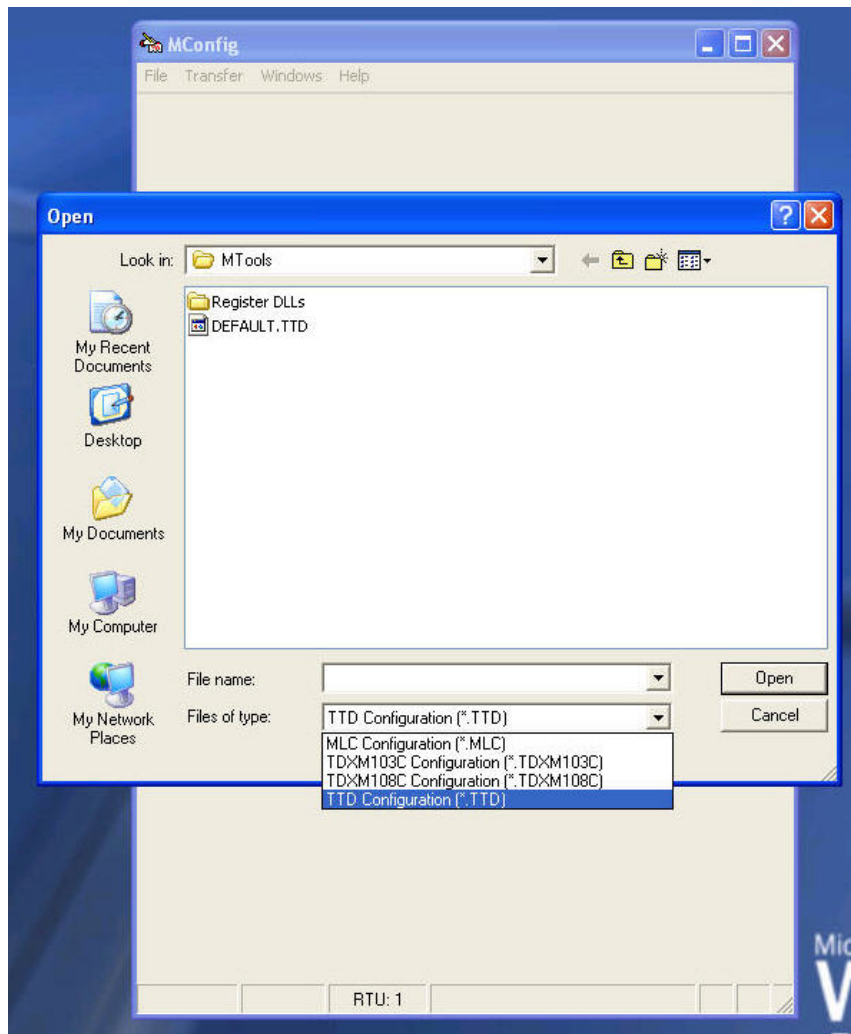


December 10, 2004

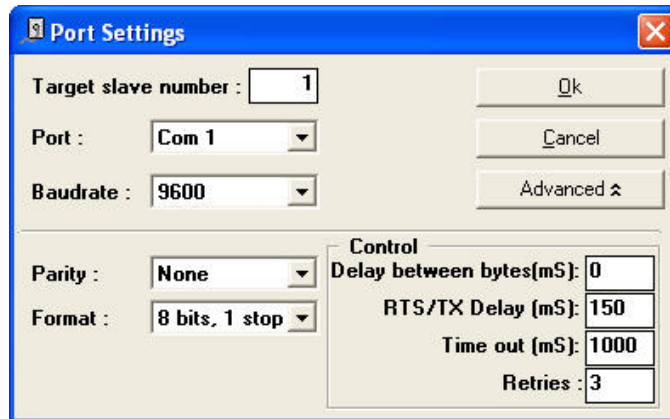
MCONFIG Quick Start Guide to Configure TTD

After installing MConfig, run the program and choose **Open** from the **File** menu. In the Open dialog, choose *Files of type* and select the TTD Configuration as shown below. This action will filter the files to show only templates related to TTD.



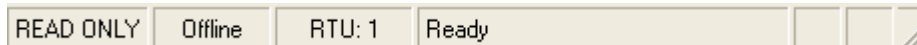
Choose a template saved from a previous session or the Default.TTD template. When the proper file has been selected, click Open.

After loading the desired template, choose **Port Settings** from the **Transfer** menu. The setting requirements vary for different devices.
 The graphic below depicts the requirements for the TTD Annunciator. Make the necessary adjustments to the settings and click Ok. To access some of the parameters shown, click the Advanced button.



The TTD will not accept Modbus writes for some registers while in the Run Mode. To perform a complete Download, it is necessary to be in Shutdown Mode on the TTD.

To connect with the TTD, choose Upload or Download from the Transfer menu. Upon completing a Transfer the TTD is connected to MConfig and polling will be continuous.
 The Status of the connection is shown at the bottom of the MConfig client window. The Status for the connection will be Offline until a successful Upload or Download has been performed. The Status will change to Online when MConfig is continuously polling (reading) information from the TTD.



Use **Upload** to read parameters from the TTD into MConfig. This action overwrites any values currently set in the loaded template with the parameters stored in the TTD.

Once the reading have been updated to MConfig the information can be saved to a file or modifications can be made to the TTD in real time by changing a value of a parameter while connected.

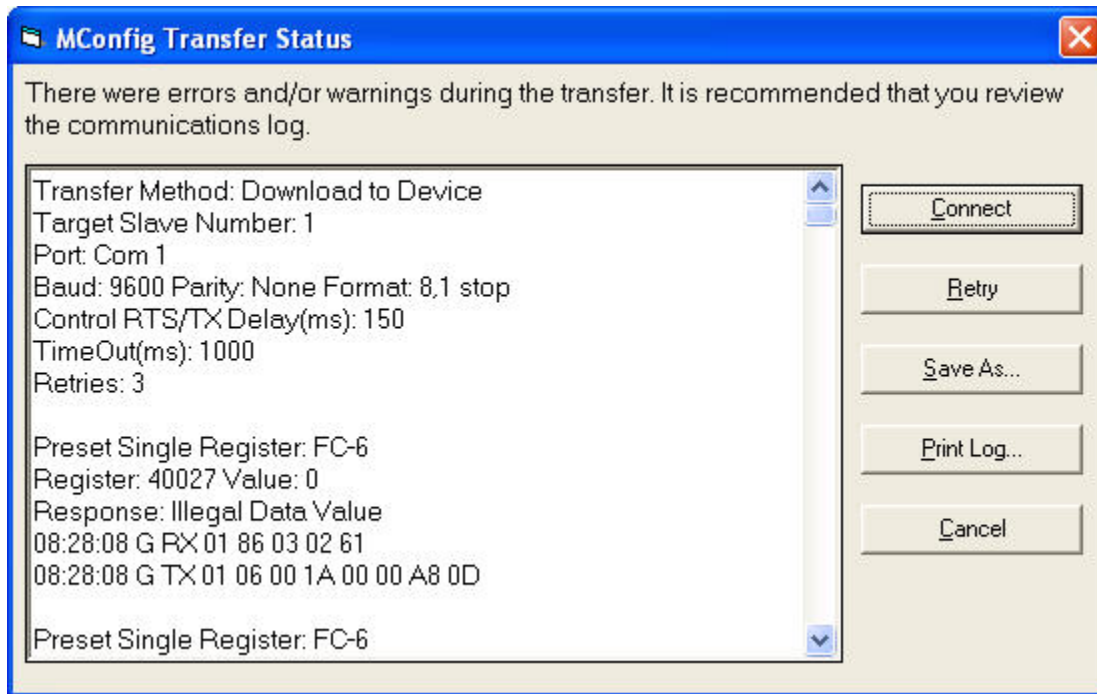
This method is best for making minor changes to parameter in the TTD without affecting all settings. Because Upload begins by first synchronizing MConfig with settings in the TTD, only changes made to parameters while connected with MConfig will be changed in the TTD.

To configure the TTD with a desired template of settings use **Download** from the Transfer menu. This action overwrites any values currently set in the TTD with parameters from the loaded template. There are certain rules that the TTD adheres to in order to prevent improper setup. During Download, settings that violate these rules will cause an error to be logged. In some instances, the captured errors may also be related to communication problems.

MConfig will attempt to write each parameter up to the number of retries configured in the Port Settings dialog. If the TTD responds with an exception, MConfig will continue to Download all parameters before displaying the MConfig Transfer Status dialog. If no errors are detected, MConfig will enter the Online mode and continuously poll the TTD without displaying the MConfig Transfer Status dialog.

The graphic below depicts a typical error that occurs when Downloading a configuration to the TTD. The Sensor Mode Setting, for example, can cause the errors shown below.

Because the TTD will not allow individual channels Sensor Types to be set when the Sensor Mode Setting is set to a value other than zero, the TTD responds with Illegal Data Value when MConfig attempt to write to these parameters.



If the errors reported are *Response: Illegal Data Value*, some of the rules have been violated and some parameters stored in the template may not have been Downloaded to the TTD. This is normal and expected because MConfig does not know the rules, it just attempts to Download all settings.

To continue in Online mode, just press Connect on the MConfig Transfer Status dialog. It is always a good idea to verify all the settings meet requirements before ending any session.

To end a session, choose **Disconnect** from the Transfer menu. After the status line shows Offline, any changes made to parameters are not changed in the connected TTD.

Save

If the settings need to be preserved for later Download or reference, just Save the template using the **Save As** choice in the File menu.

Print

A document reference can be generated by using the Print function from the file menu. Use either **Print Page** or **Print All** to generate a copy of all the parameters from the loaded template. This can be done Online or Offline, however, values may be changing if connected to a TTD in Online mode.