

CH Devices

CH10, CH20 and CH30 Models

The chambers are designed to be used with the series LC10 liquid level controller but may also be used with other types of level switches and controllers. We offer two sizes of the horizontal chambers CH10 and CH20 and a full line of vertical chambers CH30. The upper dome portion of the CH30 can also be ordered separately for top entry into a vessel.

Chambers offer the benefit of isolating the process fluid from the turbulence of the main vessel making for a more accurate level measurement. They are also an excellent choice where the main vessel's internal geometry may block the direct installation of a level controller. The CH30 vertical chambers are fully customizable to meet many process piping sizes and connections.

Specifications

CH10 and CH20

Sizes:

Controller Connection: 2" NPT

Process Connection: 1" NPT

Pressure Rating: 2000 psi

Materials: Carbon steel or stainless (optional)

CH20



CH10

CH30

Sizes:

Chamber: 3" and 4"

Controller Connection: 2" NPT or flanged

Process Connection: 1", 1 1/2" and 2" NPT

Pressure Rating:

Flanged: Up to 1500 class

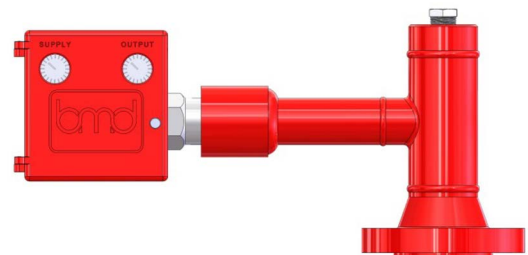
Threaded: 600 class standard, higher rating available by request

Materials: Carbon steel or stainless (optional)

CH30



CH30 (Dome Only)

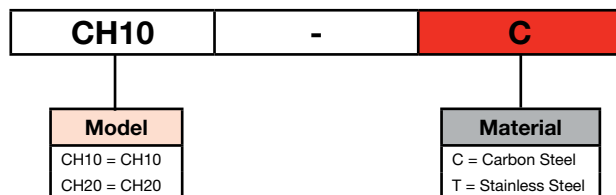


How to Order CH10, CH20

Options are listed below. All configurations may not be available. Call your sales representative or FW Murphy for more information.

Example Model No. **CH10-C**

CH10 Series Horizontal Chamber, Carbon Steel, 2" NPT Controller Connection, 1" NPT process Connection.



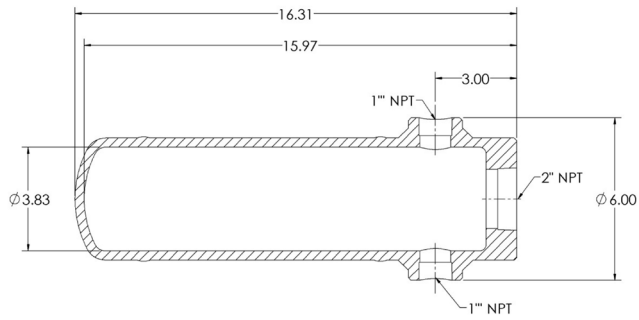
NOTE: Level control arm must be 7.75" for proper alignment with CH10.

FW Murphy is the exclusive BMD distributor for new equipment packages.

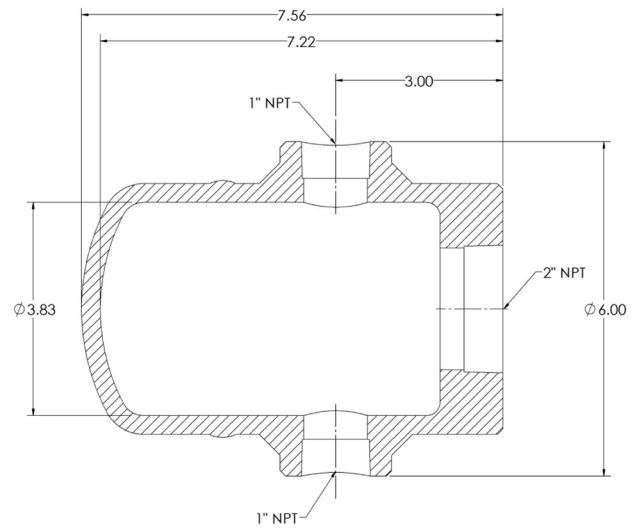
All trademarks and service marks used in this document are the property of their respective owners. This Beaumont Manufacturing and Distribution Co. product is exclusively distributed for new equipment packages by FW Murphy in the Natural Gas Compression market.

Dimensions

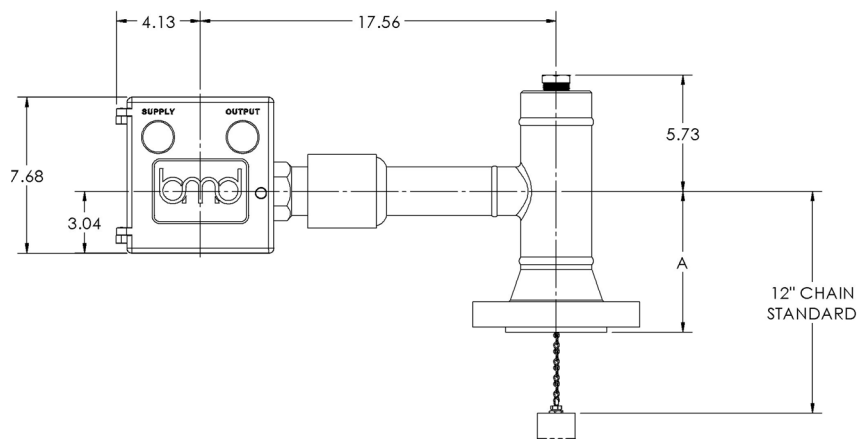
CH10



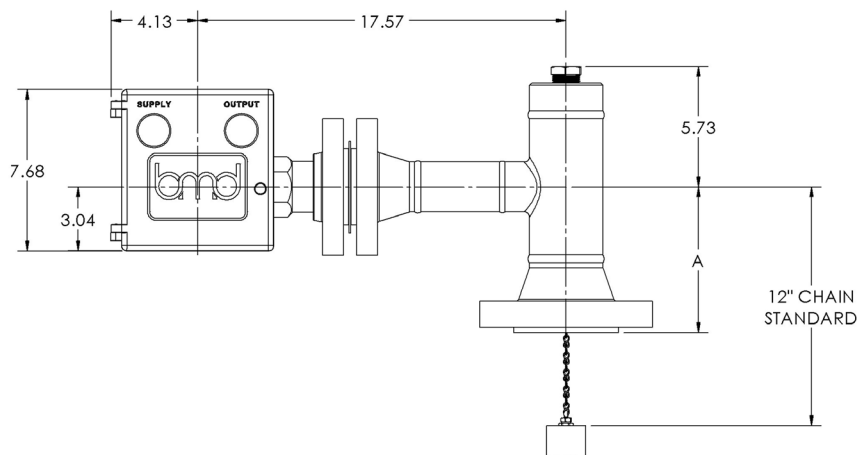
CH20



CH30 (NPT Dome Only)



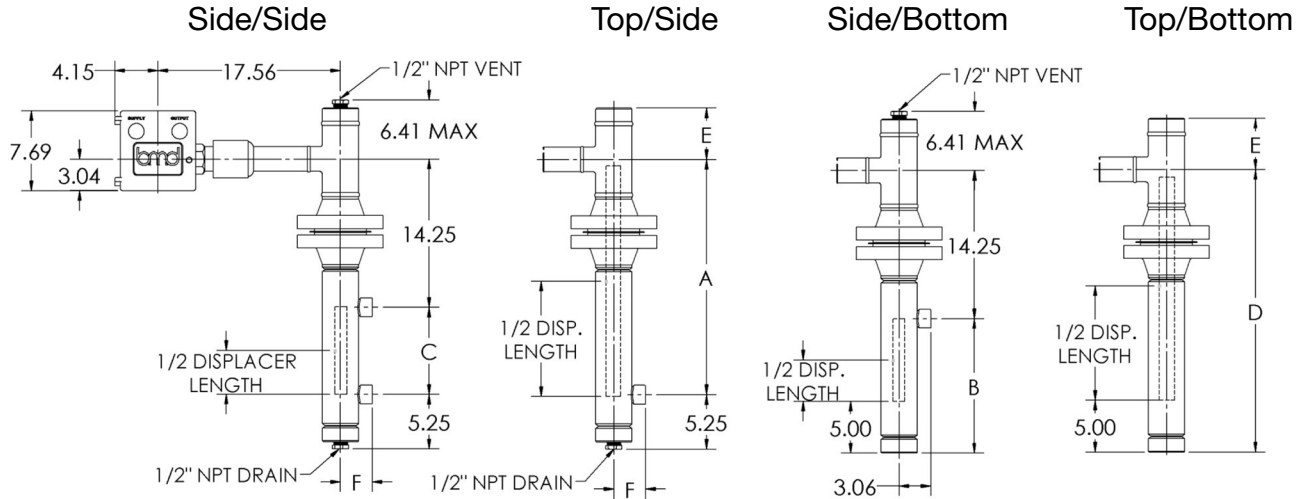
CH30 (Flanged Dome Only)



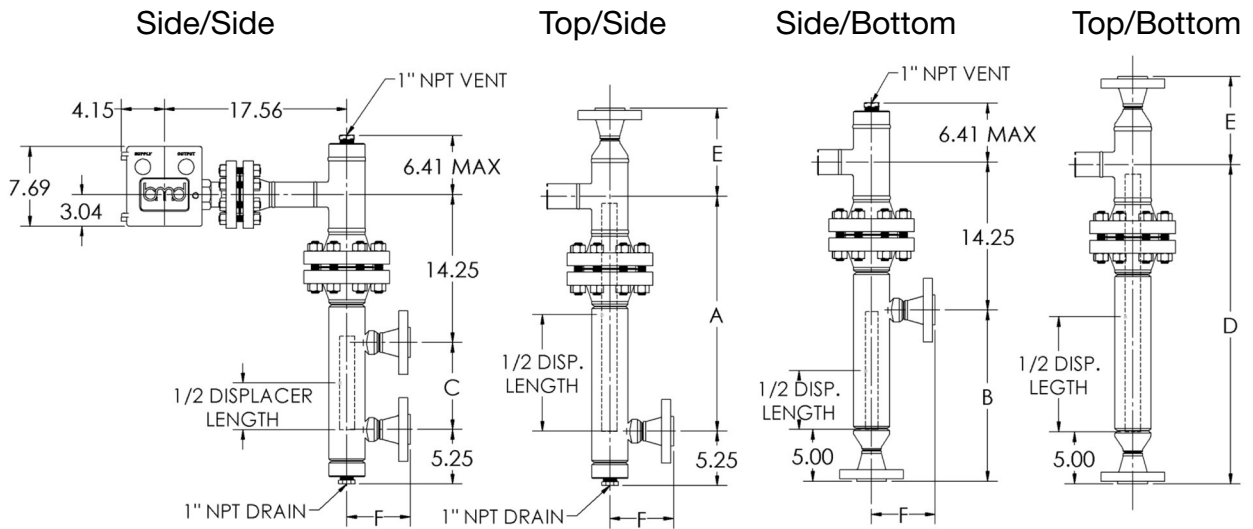
Dimension A		
Flange Class	Dome Size	
	3"	4"
150 RF	6.19	7.19
300 RF	6.56	7.56
600 RF	6.93	8.44
600 RTJ	7.00	8.50
900 RF	7.69	8.94
900 RTJ	7.75	9.00
1500 RF	8.31	9.31
1500 RTJ	8.38	9.38
2500 RF	10.31	11.69
2500 RTJ	10.37	11.75

CH30 Dimensions

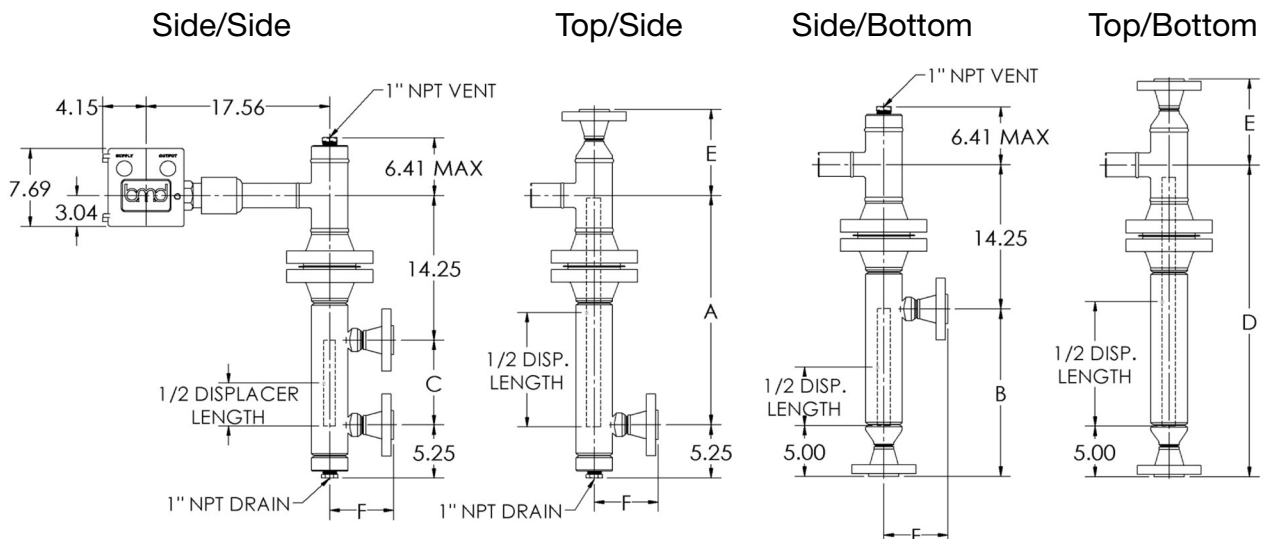
Threaded Level Controller with Threaded Vessel Connection



Flanged Level Controller with Flanged Vessel Connection



Threaded Level Controller with Flanged Vessel Connection



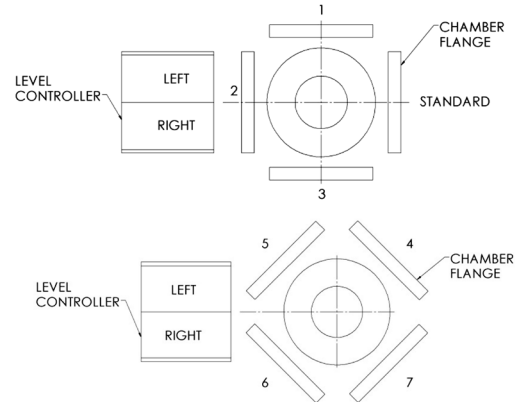
(Flanged level controller with threaded vessel connection also available.)

CH30 Dimensions (continued)

CH30						
Chamber Size	Vessel Connection			Dimension		
	Type	Size	Rating	E	F	
3"	NPT	1"	All	4.91"	3.12"	
		1 1/2"			3.19"	
		2"			3.31"	
4"		1"		5.72"	3.62"	
		1 1/2"			3.69"	
		2"			3.81"	
3"	Flanged	1"	150#	7.10"	Consult Factory	
			300#	7.35"		
			600#	7.60"		
		1 1/2"	150#	7.35"	5.62"	
			300#	7.60"	5.88"	
			600#	7.91"	6.19"	
2"		150#	7.41"	5.88"		
		300#	7.66"	6.12"		
		600#	8.04"	6.5"		
4"		Flanged	1"	150#	7.91"	Consult Factory
				300#	8.16"	
				600#	8.41"	
	1 1/2"		150#	8.16"	6.12"	
			300#	8.41"	6.38"	
			600#	8.72"	6.69"	
2"	150#	8.22"	6.38"			
	300#	8.47"	6.62"			
	600#	8.85"	7"			

CH30			
Dimension	Chamber Style	Displacer Length	Dimension
C	Side-Side	14"	14"
		32"	32"
A	Top-Side	14"	15"
		32"	33"
B	Side-Bottom	14"	18"
		32"	36"
D	Top-Bottom	14"	20"
		32"	38"

Orientation Chart



How to Order CH30 Model

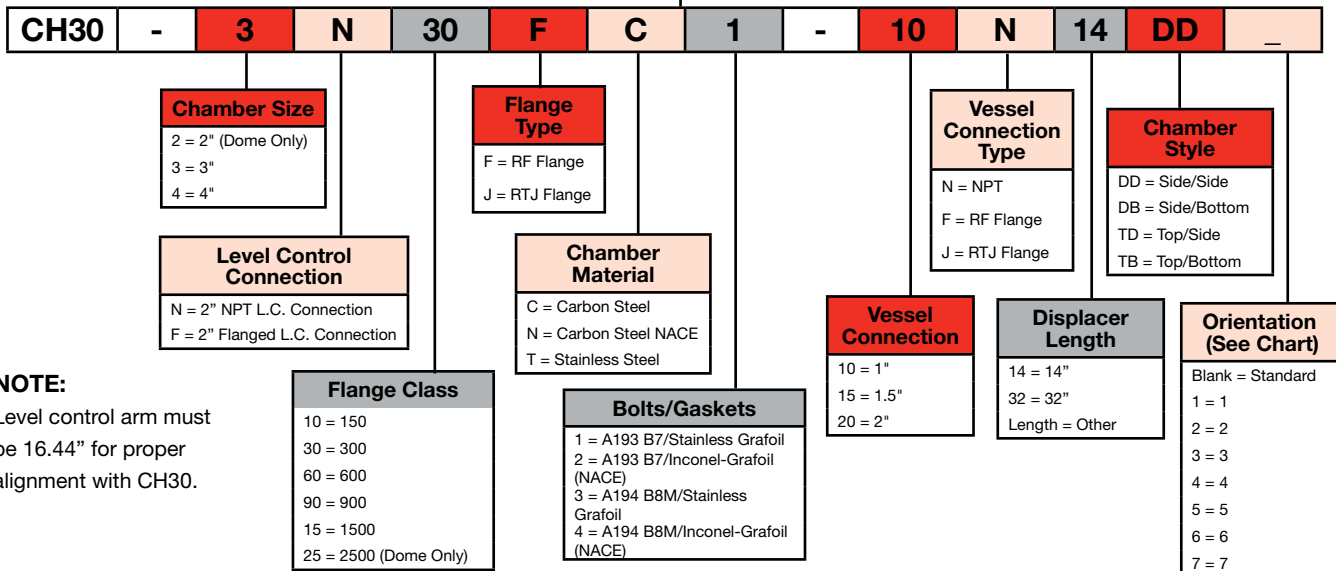
Options are listed below. All configurations may not be available. Call your sales representative or FW Murphy for custom options.

Example Model No. **CH30-3N30FC1-10N14DD**

CH30 Series Chamber, 3" Chamber, 2" NPT Level Control Connection, 3" 300 Class RF Flange, Carbon Steel Chamber, A193 B7 Bolts with Stainless-Grafoil Gaskets, 1" NPT Vessel Connections, 14" Displacer Length, Side/Side Chamber Style, Standard Orientation

(CH30-3N30FC if ordering dome only)

To order dome only stop here



NOTE:
Level control arm must be 16.44" for proper alignment with CH30.

FW Murphy is the exclusive BMD distributor for new equipment packages.